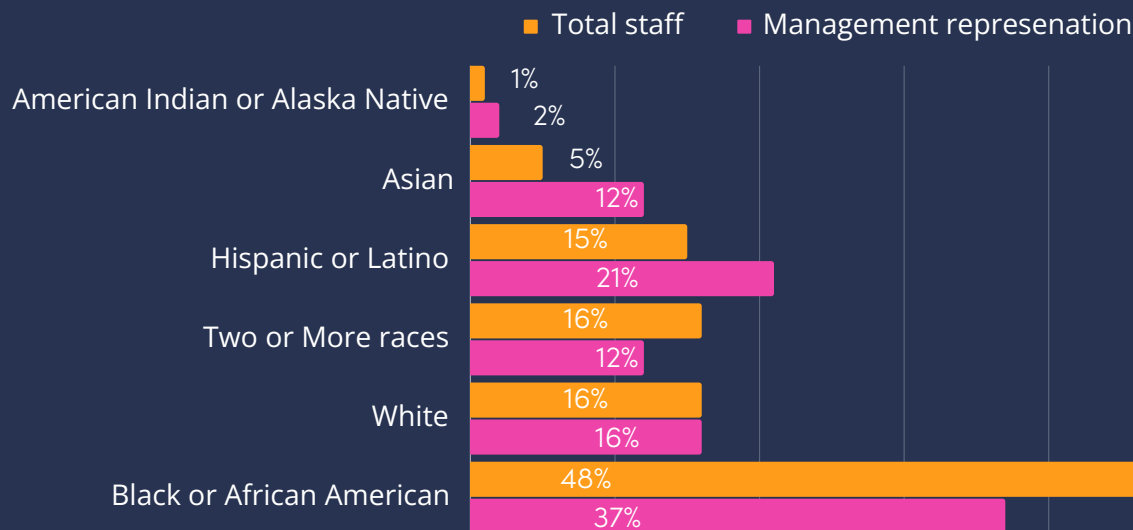




DIVERSITY, EQUITY, INCLUSION, & BELONGING

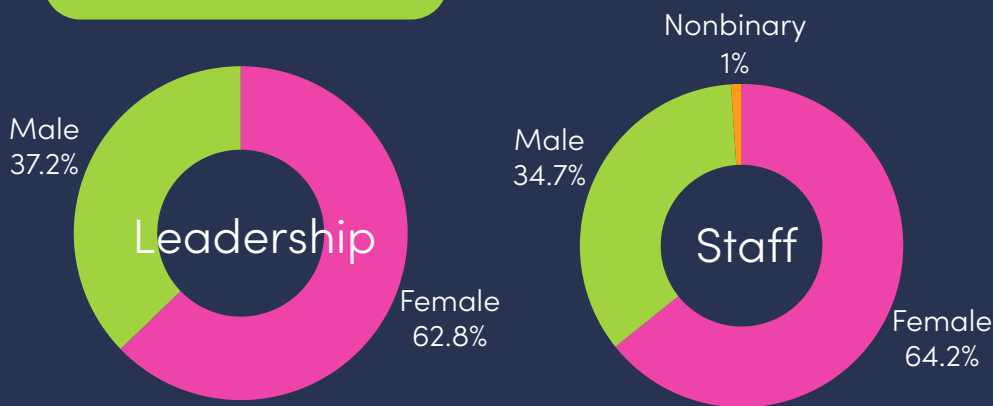
Insight Housing is committed to fostering a work environment that is diverse, inclusive, welcoming, and supportive of all people, regardless of their background or identity. Our most recent data reflects that we have been able to keep to this commitment, built a diverse workforce, and have a high DEIB scorecard as well as net promoter score.

Racial Distribution



Insight Housing has a racially diverse workforce with a proportionate representation among staff and leadership levels.

Gender Distribution



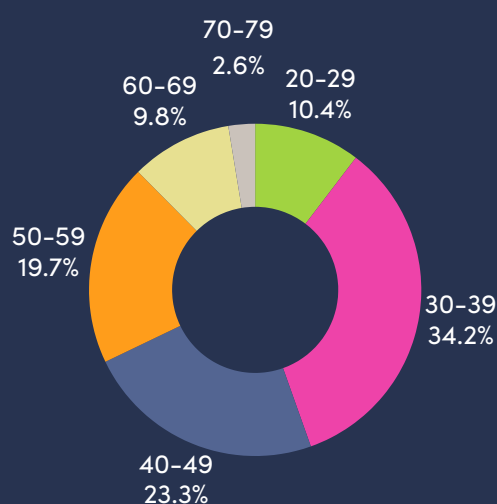
Insight Housing is a female led organization with a proportionate gender representation across our leadership and staff levels.

Veteran Status

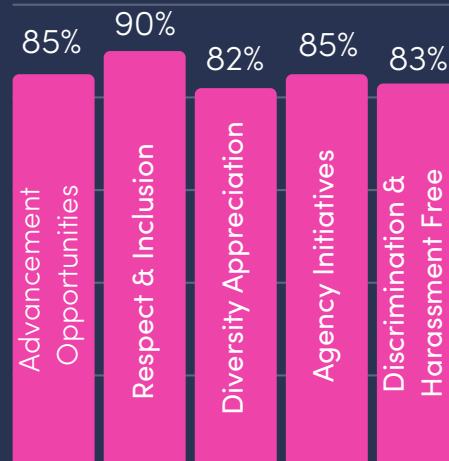
Approximately 10% of our workforce are Veterans. As an organization largely serving Veterans, we are committed to expanding our Veteran workforce.



Age Distribution



DEIB - Employee Satisfaction Rate



Results from the 2022-2023 Employee Satisfaction Survey showed high levels of satisfaction in DEIB related areas.

85% of staff would recommend Insight Housing as a good place to work.

We will continue to learn, expand our initiatives, and maintain a diverse, equitable, and inclusive workforce where everybody is welcome!